

## Chemistry Services

Atuka Chemistry Services developed out of a need for cost-effective, high-quality research products that we routinely used in our preclinical models. Atuka, Inc. is a contract research organisation that offers state-of-the-art pre-clinical models of Parkinson's disease.

**Highly competitive on price**

**Compounds offered from milligram to kilogram scale**

**Compounds always assayed prior to despatch – ensures structure and purity**

---

### Compound procurement

Many research reagents are expensive and often hard to source. Using our network of approved suppliers Atuka is able to source research chemicals, active pharmaceutical ingredients, starting reagents, and chemical intermediates on a mg to multi-kg scale at highly competitive prices.

These compounds are all analysed in-house before being despatched thus guaranteeing purity and structure of the compound.



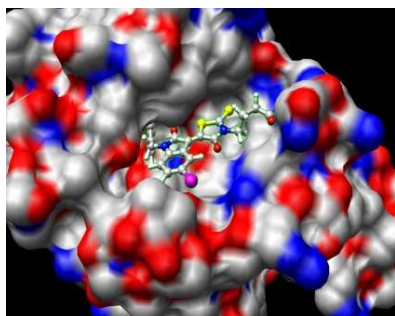
---

### Medicinal chemistry

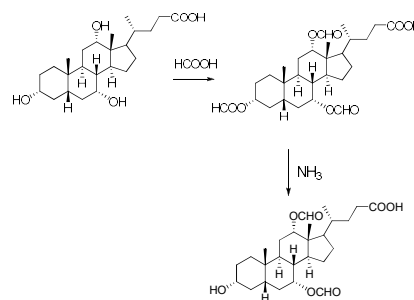


We offer bespoke synthetic and medicinal chemistry in our well equipped and modern laboratories. We can undertake the synthesis of single chemicals or compound libraries and can provide physicochemical analysis of synthesised compounds upon request.

## Process development and in silico services



Our internationally-recognised chemists can work with you to develop synthetic routes for hard to make compounds. We also offer state-of-the-art *in silico* capabilities to generate virtual compound libraries or investigate pharmacophores that are of interest.



## Parkinson's disease research products

We offer a range of compounds used in Parkinson's disease research. We use many of these compounds in our preclinical models.

### *Neurotoxins*

MPTP.HCl \$900 / 1 g

6-OHDA \$400 / 1 g

### *Neuroprotectants*

Smilagenin \$250 / 50 mg

Modafinil \$710 / 1 g

### *Dopamine agonists*

Carbergoline \$570 / 50 mg

Rotigotine.HCl \$560 / 100 mg

Pramipexole \$375 / 100 mg

### *Dopamine antagonists*

Clozapine \$290 / 1 g

Haloperidol \$100 / 10 g

Olanzapine \$225 / 500 mg

L-745,870 \$300 / 100 mg

### *Ion channel blockers*

Isradipine \$250 / 50 mg

Diltiazem \$180 / 10 g

### *Monoamine uptake inhibitors*

Fluoxetine \$240 / 500 mg

Reserpine \$80 / 5 g

Escitalopram \$200 / 50 mg

### *L-DOPA metabolism inhibitors*

Carbidopa \$115 / 5 g

Entacapone \$270 / 100 mg

### *NMDA antagonist*

Amantadine \$115 / 25 g

### *Other*

Capsaicin \$410 / 500 mg

Istradefylline \$685 / 50 mg

Clozapine \$290 / 1 g

Tetrahydrocurcumin \$460 / 5 g

Naproxen \$33 / 5 g

Glatiramer acetate \$315 / 25 mg

Imatinib \$450 / 500 mg

Fenofibrate \$300 / 50 g

GBR12909 \$360 / 1 g